

# cplace

Integration of product and process data into project scheduling

## Gantt Timebox

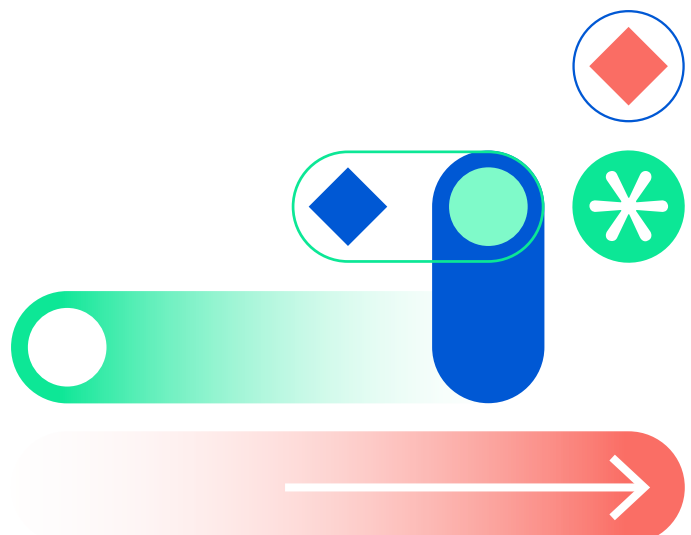
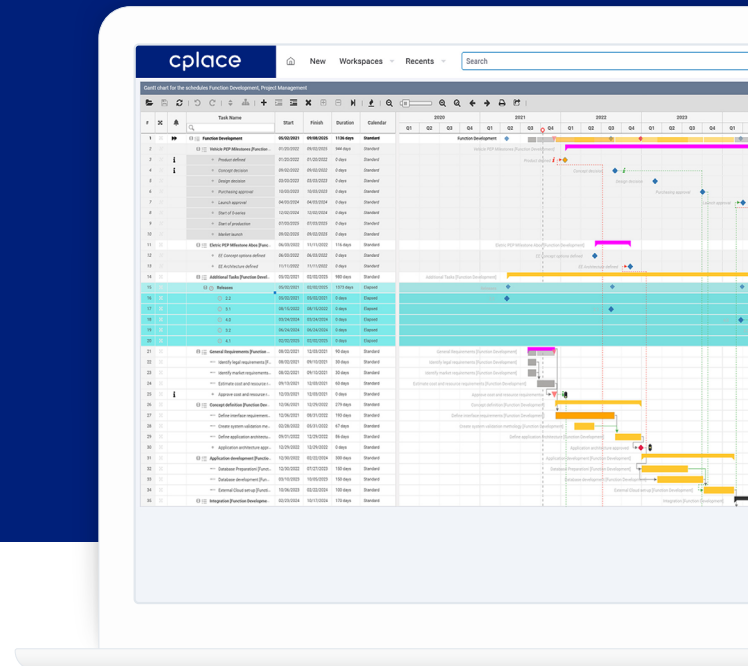


Integration of real-time data into project scheduling, even if it is not a milestone or activity. The *Gantt Timebox* connects the project world with the process and product world and thus offers a 360° view of all information in a common project plan. For example, component information, maturity levels, user stories and much more can be integrated with real-time data into the hybrid project schedule.

To be considered by the timebox, the information must have either a start date or an end date, or both. In addition, there are a variety of display options to show the timebox items in the schedule.

➔ [More at cplace.com](https://cplace.com)

The Gantt Timebox is part of  
cplace Enterprise Scheduling.





**Integration of product and process data from different systems into the project world**



**Integration of any information with live data into the scheduling process**



**Comprehensive, central planning without manual rework**

## Business Challenge

Project managers need a lot of information to be able to make decisions. However, this information is not always available in the format of a task or milestone. cplace makes it possible to integrate this information with live data directly into project scheduling. Regardless of whether it is user stories directly from Jira or, for example, component information – it is seamlessly integrated into the planning and can be set in dependence to any other planning elements. This creates a complete planning overview without media breaks.

## Customer Benefits

With *Timebox*, cplace offers a unique functionality that for the first time allows project planners to map plans with unprecedented realism. While planning reality has always been distributed across a multitude of systems and specialist domains, classic Gantt plans could only depict processes and milestones. The *cplace Timebox* changes all that.

## Special Features

1. The *Timebox* makes it possible to integrate different data worlds with live data in a schedule and to set them in relation to other planning elements. Objects that do not belong to the type milestone, schedule or task in the Gantt can be represented in this way.
2. An integration of the *Timebox* into the scheduling allows a well-informed, holistic planning without manually traced non-scheduled dates and deadlines.
3. Abstractly, the timebox can be seen as a container that stores information and can be integrated into a schedule by setting a start and/or end date. With the cplace search, elements can be dynamically placed into this container, which means into the timebox, in order to then visualize them in the Gantt.