

# cplace

Classic or agile? -  
Classic AND agile!

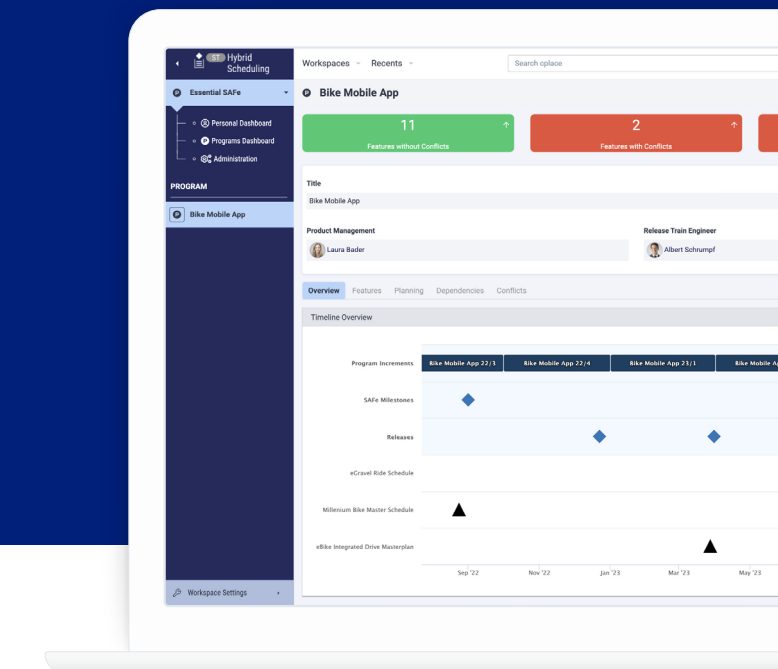
## Hybrid Scheduling



Hybrid scheduling combines agile practices, which emphasize flexibility and incremental delivery, with waterfall scheduling methods, which are often required for projects with clear requirements and strict timelines.

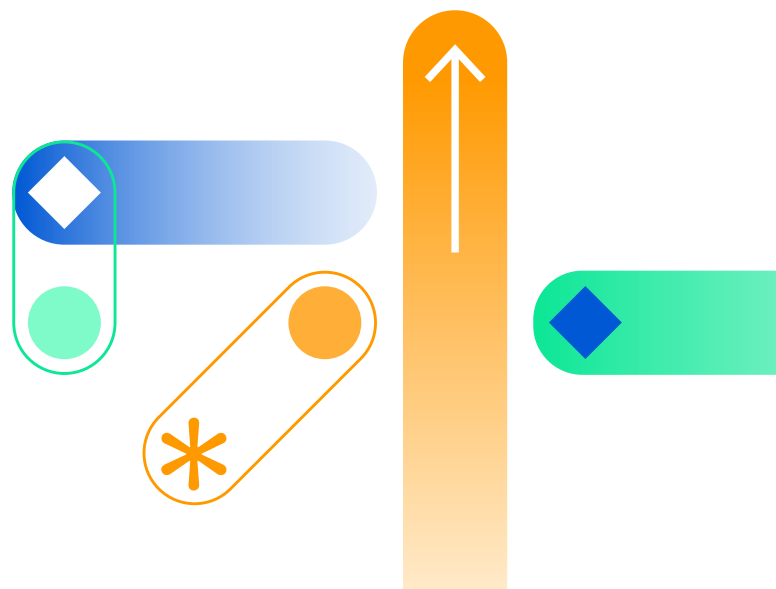
The cplace *Solution Template Hybrid Scheduling* acts as a bridge between the classic and agile worlds. It enables the integration of the timeline of agile work scopes with classically planned project schedules.

Relationships and dependencies between project milestones and agile planned content can be easily linked and displayed at any time based on live data. All stakeholders continue to work in their familiar world, but without losing sight of the big picture.



An early warning system detects schedule inconsistencies in planning and provides timely information about conflicts so that appropriate action can be taken to avoid costly or image-damaging risks to the project.

→ [More at cplace.com](https://cplace.com)





**Handshake between  
traditional project  
world and agile  
product world**



**Best balance  
between flexibility  
and predictability**



**Communication and  
collaboration among  
all teams and stake-  
holders**

## Business Challenge

Organizations are working on increasingly complex projects, typically across multiple teams and disciplines. Just as the project components are different, so are the planning and working methods. Traditional, linear project planning is increasingly being challenged by agile working methods. The lack of integration and visibility into project relationships leads to errors and painful delays.

## Customer Benefits

The Solution Template *Hybrid Scheduling* enables the integration of the timeline for agile work scopes (e.g., sprint and release dates) with traditional project schedules (project milestones and tasks). Potential schedule conflicts and delays are made visible at any time and in real time. This leads to complete transparency of the components and their schedule dependencies for all project participants, which promotes collaboration and reduces errors and unpleasant surprises due to a lack of coordination in the project.

## Special Features

1. Agile work scopes and associated deadline information can be dynamically added, visualized, and integrated into planning in the context of project schedules using the cplace Gantt Timebox.
2. Relevant project deadlines are clearly displayed to agile teams on their dashboards in the context of their own schedule track (sprints, releases, etc.).
3. Planning inconsistencies between classic project plans and agile work scopes are detected and displayed to both sides in their respective work views/dashboards as potential schedule conflicts.